



# Discovery Playhouse

Children's Society

November/December 2017

## ADMINISTRATOR'S COLUMN

November is here and along with it SNOW! Time to change over to the winter supply of clothing. Boots, toques, mittens and scarves. We will still be taking the kids outside plus having time in the gym and multipurpose room depending on the day. Make sure that everything is labeled. So many matching items with opportunities for mix ups. If you have any extra items for common use, please donate. We always need extra pants, shirts, SOCKS, and mittens.

Policy reminder for the upcoming cold and flu season:



**FEVER** - along with general symptoms such as listlessness (must not return to the Centre for 24 hours). If, during the day, we notice that your child is presenting with a fever, we will take the child's temperature and if the fever reaches 38.8 degrees Celsius, the parents will be called to come and pick up that child.

**DIARRHEA, NAUSEA OR VOMITING** (must not return to the Centre for 48 hours clear of last bout).

If you have any questions or concerns regarding our Preschool, Daycare, Buzzing Bees or Adventurer programs, please don't hesitate to contact me either in person, phone or email [admin@discoveryplayhouse.ca](mailto:admin@discoveryplayhouse.ca).

Rachel Hess

## DAYCARE COLUMN

Hello Daycare/ Buzzing Bees Families!

It has been a busy couple of months! We are finally getting the muddy buddy transition down to an art while embracing the madness! We have made it past the PME playground for our morning adventures and have enjoyed time in the forest (Hoffman Park) and to Lion's Park on Harris Road. The children are great at "sticky gluing" their hands to their partners - following who's in front of them and we are able to cross roads safely!

The children have been playing non-stop with the trains and train tracks (thank you Wyatt for the donation of all of our wonderful new trains/tracks that have provided us with many fun and exciting extensions, twists and turns!). We have also enjoyed getting ready for Halloween - there has been a lot of dress-up play, ooey goey art activities and slimy science! We had a fabulous day both at the pumpkin patch and at our Halloween Party! Shout out to all our parent helpers and drivers - thank you!!



Now that Halloween is over, the children's current emergent interests have been camping, trains, airplanes, and robots.

Hot Lunch - As we have gotten to know your children, their likes and dislikes, it was abundantly clear that none of them were a fan of our chow mein. We swapped it out and added a new delicious lunch to our menu. The children now have a pancakes/eggs/ham lunch on their menu.

#### Dates to Remember:

November 7<sup>th</sup> - Library Storytime (group 1)

November 8<sup>th</sup> - Senior Centre visit (10:30)

November 10<sup>th</sup> - PME Pro D Day

November 13<sup>th</sup> - Daycare closed (Remembrance Day)

November 22<sup>nd</sup> - Nursing Students will be visiting us

November 27<sup>th</sup> - PME 11:30 early dismissal - regular Kinder hours @ 2:20pm

November 28<sup>th</sup> - PME Student teacher interviews - **No Buzzing Bees.**

November 28<sup>th</sup> - PME Student teacher interviews - Kinders are lucky to join the Adventurers for a fieldtrip to Captain Kids.

December 7<sup>th</sup> - Wesbrooke Senior Centre visit (10:30)

December 21<sup>st</sup> - Christmas Party

December 22<sup>nd</sup> - Last day before Winter Break.

**DAYCARE OPEN January 2<sup>nd</sup>.**

The week of January 2<sup>nd</sup> - 5<sup>th</sup> **KinderCare** is available for \$25/day - please sign up.

**BUZZING BEE'S** starts January 8th



We are sad to inform you that Sheryl will be leaving our Centre. She has been a valuable part of our team over the last four years and a dear friend. She will be greatly missed.

As always, let us know if you have any questions or concerns.

Christina C, Christina H, Sheryl, and Emily

## PRESCHOOL COLUMN

Two months have flown by! All the classes seem to be settled now. Our fieldtrip to the Pumpkin Patch was great and we were lucky with the weather. The children had a fun time at our Halloween parties. Thank you to those parents that helped us out in the class and those that brought the food/drink.

November I am sure will bring some wet weather. Please make sure your child has what they need to be outside for half an hour. Please note that we are not allowed to wear boots in the gym or multipurpose room, so your child will need to have other non-marking shoes.

There will be no school on November 10, 13, and 28. On November 28<sup>th</sup> we will be having **informal** parent/teacher interviews. If you wish you may sign up for a 10-minute slot where we can informally talk about your child's progress.

On November 22<sup>nd</sup> we will have some Douglas College Nursing students coming in the morning to do a presentation on hand washing.

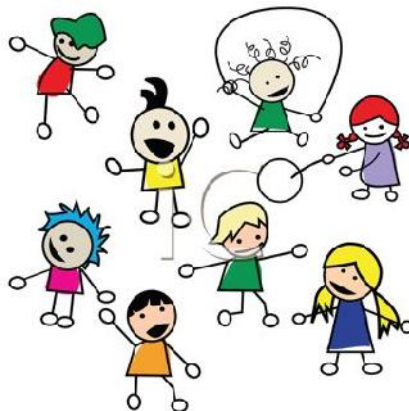
December will be a crazy, busy month. Our Christmas parties will be on Dec 21 & 22. On the party day, every child will need to bring a wrapped Christmas tree ornament labelled "To My Friend. From (your child's name)".

Christmas break will be December 25 to January 7<sup>th</sup> inclusive.

We are currently exploring some possibilities for fieldtrips. Please watch for any notices if any of these pans out. If you have any ideas for your child's class, please let us know.

Thanks everyone for a great start to the year!

Lori W & Sonja



## ADVENTURER'S COLUMN

It has been a great fall. Besides a few very wet days the weather has been fantastic, and we have spent a lot of time outside. The children have been playing soccer, kick the can and using the play equipment at the school. We are outside in all types of weather so please bring appropriate clothing, boots and jackets to fit the weather. Our afternoon playtime is popular, but the children have also really enjoyed our morning gym time. Now we have gym access available every morning. While we may not use it every day, if we're not in the classroom in the morning, we'll be in the gym.

The children have been playing hockey and dodge ball. Jane and I have played a few rounds with them. With all this active play the children can be very thirsty so please pack them a water bottle.

Once we are back in the room there are a ton of activities that have been enjoyed by all. The playdoh contest is when a theme like "sports" is picked and the children have 10 minutes to come up with something. They have so many creative ideas. The rainbow loom is also being used a lot. They make all types of colorful rings, bracelets and necklaces. With the hockey season in full swing the children have been playing a lot of hand hockey, as well as building with blocks and Lego.

Our Halloween party was a huge success and the children made some very cool Jack O' Lanterns. This year our Christmas project is Operation Christmas Child. If you have any toys or school supplies that can be boxed to be shipped to children around the world, please bring them in.

We had our first library visit this year and we will be continuing that over the coming months. 2017 has been a great year and we are looking forward to what 2018 will bring.

Dates to remember:

November 10<sup>th</sup> - Pro D Day, please sign up for care

November 13<sup>th</sup> - Center CLOSED for Remembrance Day

November 27<sup>th</sup> - PME early dismissal at 11:30, regular Adventurer hours 2:20pm pickup

November 28<sup>th</sup> - No School - All day Adventurer care, please sign up for staffing purposes.

December 22<sup>nd</sup> - Last day of care before Winter Break.

**CENTER OPENS January 2<sup>nd</sup>.**

The week of January 2<sup>nd</sup> - 5<sup>th</sup> **Adventurer care** is available for \$25/day - please sign up

January 8<sup>th</sup> - School is back in session.

Rob and Jane

